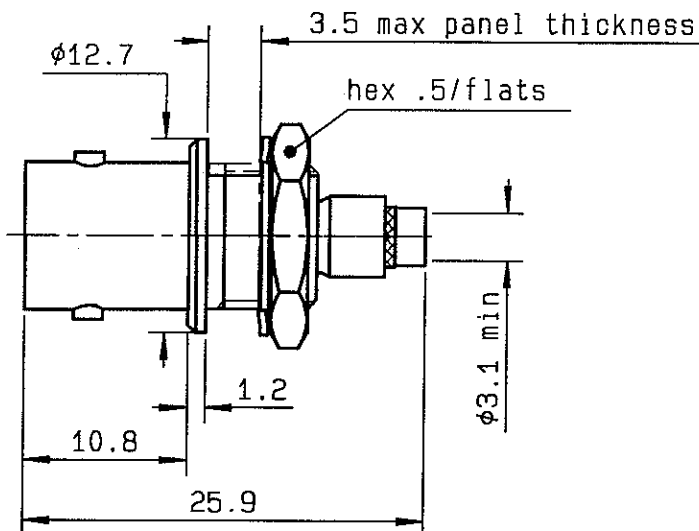


STRAIGHT BULKHEAD JACK CRIMP FOR 2.9/75
PACKING 100



CABLES : POPE H11

CHARACTERISTICS

NOMINAL IMPEDANCE	75 Ω
FREQUENCY RANGE	0-1.5 GHz
TEMPERATURE RATING	-35/+70 °C
VSWR	NA + - x F(GHz)Maxi
RF INSERTION LOSS	NA \sqrt{F} (GHz) dB Maxi
VOLTAGE RATING	500 Vrms Max
DIELECTRIC WITHSTANDING VOLTAGE	1500 Vrms min
INSULATION RESISTANCE	5000 M Ω min
HERMETIC SEAL	- Atm.cm3/s
LEAKAGE (pressurized only)	- Mpa
WEIGHT	- gr

STANDARDISATION

CABLE RETENTION	40	N min
CENTER CONTACT RETENTION		
Axial force - mating end	10	N min
Axial force - opposite end	10	N min
Torque (Min)	NA	cm.N min
RECOMMENDED TORQUES		
Mating	NA	cm.N
Panel nut	250	cm.N
Clamp nut	NA	cm.N

CONSTRUCTION

CONNECTOR PARTS	MATERIALS	FINISH
BODY	BRASS	NICKEL
OUTER CONTACT	BRASS	NICKEL
CENTER CONTACT	BRASS	GOLD
INSULATOR	PTFE	-
-	-	-
-	-	-
-	-	-
-	-	-
-	-	-

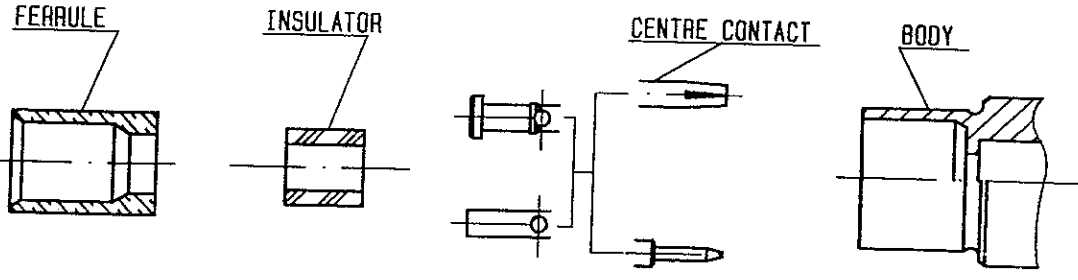
ISSUE	REVISION No	DESCRIPTION	BY	DATE
-	-	-	-	-
9626	96-06-301	2.95 mini -> 3.1 mini	MARTIN	25-06-96
9607	-	Added cable type	MARTIN	14-02-96

Initiated on 10/01/96

The information given here is subject to change without notice. Design changes may be in order to improve the product.



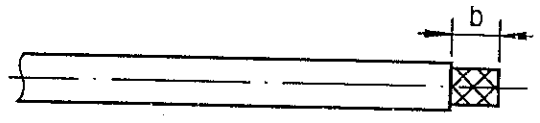
Approval by MARTIN



①

Strip the cable .

-
-
-



Stripping	a	b	c	d	e	f
inch	0.118	0.394	0	0	0.197	0.059
mm	3	10	-	-	5	1.5

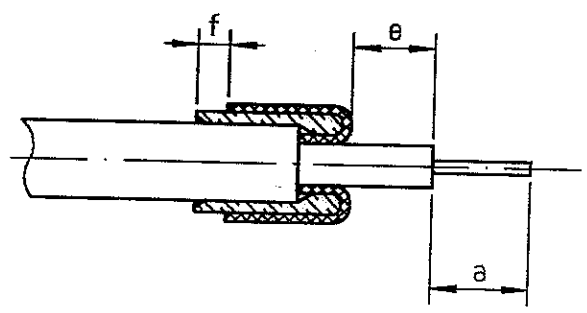
②

Slide on the ferrule until it bottoms against the jacket .

Fold back braid and trim off surplus braid .

Trim the inner conductor as shown .

-
-
-



③

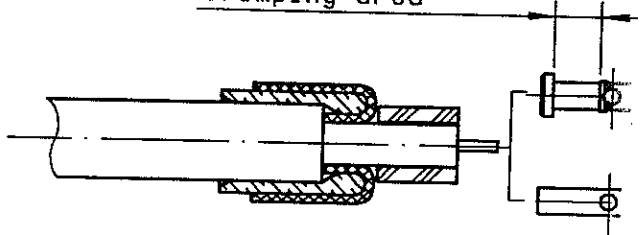
Mount the insulator on the cable .

Slide on the centre contact until it bottoms against cable dielectric .

Crimp centre contact , crimping tool R 282 223 000 (Hex. : 1.73) or crimping tool R 282 293 000 (M22520/5-01) + dies R 282 235 011 (M22520/5-11)

-
-

Crimping area

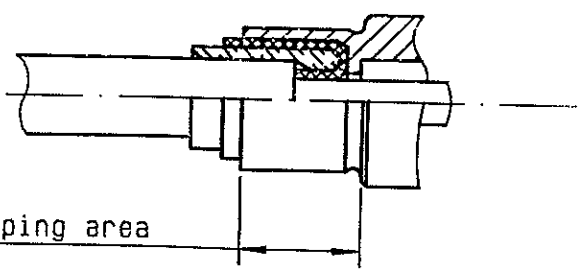


④

Slide sub-assembly into the connector body .

Crimp the body , crimping tool R 282 211 000 (Hex. : 4.52) or crimping tool R 282 293 000 (M22520/5-01) + dies R 282 235 009 (M22520/5-09)

Crimping area



4113 9211